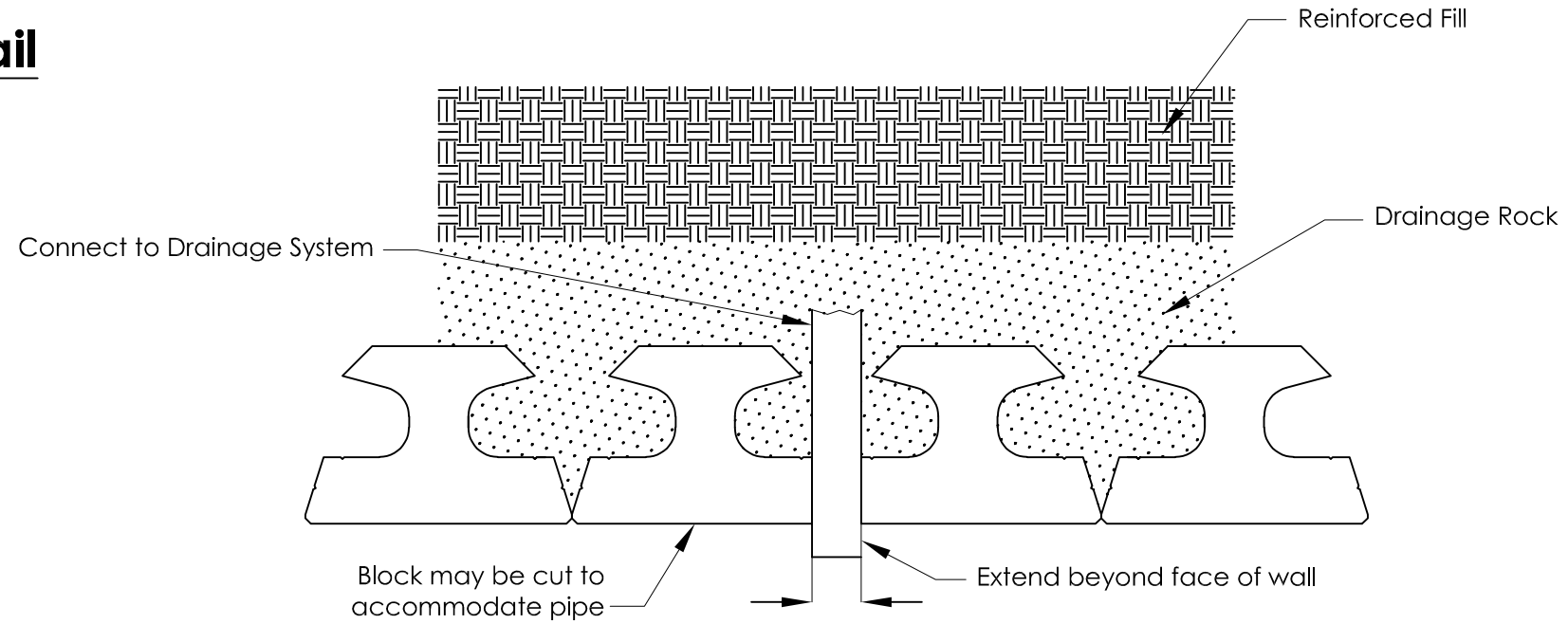
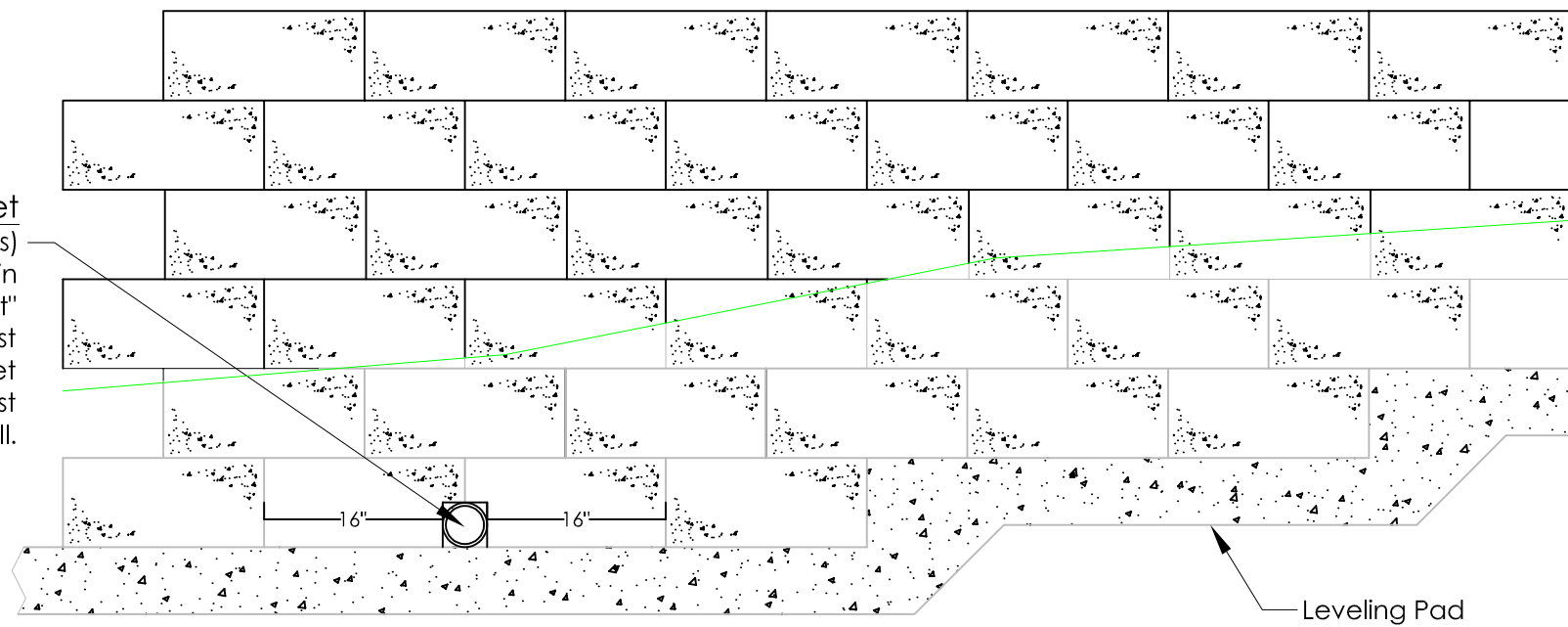


Drain Tile Outlet Detail

Rockwood Classic™



Drain Tile Outlet
(At approximately 50ft intervals)
Stub-out 4" drain pipe from heel drain through face or end of wall, to "daylight" or area drainage system at the lowest practical elevation. More than one outlet may be required if multiple low points exist along the length of the wall.



Not to Scale

This drawing is furnished for preliminary design purposes only, and should not be used for final design drawings or construction drawings without the certification of a professional engineer registered in the state in which the wall will be constructed. These drawings are "typical" and may be amended or revised by the SRW engineer based on project site conditions and purposes.

No.	Date.	Revision.	By.

PREPARED BY:

Legend	
	Leveling Pad
	Drainage Rock
	Geogrid
	Finish Grade
	Filter Fabric

Project Name:	Prepared For:
Project Location:	Drawn By: <input type="text"/> Checked By: <input type="text"/>
Drawing Description:	Sheet: <input type="text"/>
Drain Tile Outlet Detail	Date: <input type="text"/>
	Project Number: <input type="text"/>