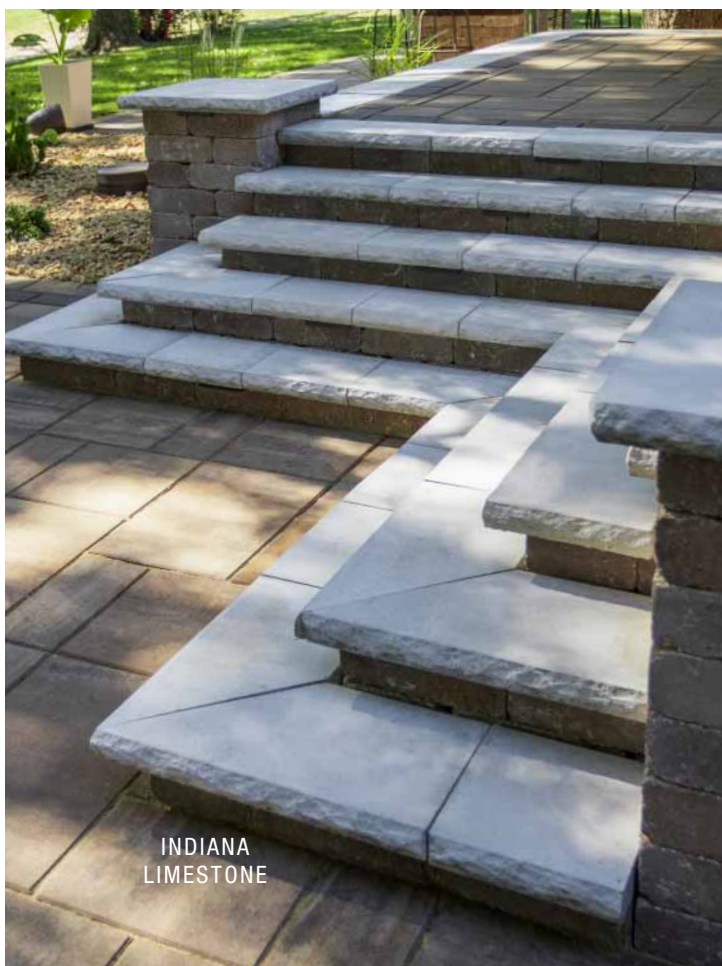


CHISELED CAP AND TOPS



INDIANA
LIMESTONE

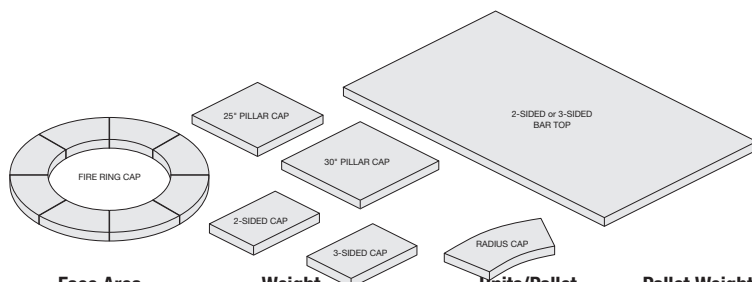


ONYX



BUFF

- Strong, wet cast reproductions of handcrafted limestone originals
- Available by pallet or piece
- Pallets CANNOT be double stacked



Item	Dimensions	Face Area	Weight	Units/Pallet	Pallet Weight
25" Pillar Cap	25 x 25 x 2.25" H	4.34 sq. ft.	110 lbs.	6 (26.04 sq. ft.)	710 lbs.
30" Pillar Cap	30 x 30 x 2.25" H	6.25 sq. ft.	125 lbs.	6 (37.50 sq. ft.)	800 lbs.
8" Radius Seatwall Cap	18.75 x 12 x 2.25" H	1.56 sq. ft.	39 lbs.	15 (23.40 sq. ft.)	635 lbs.
12" Straight Seatwall Cap, chiseled two sides	24 x 12 x 2.25" H	2 sq. ft.	53 lbs.	15 (30 sq. ft.)	845 lbs.
12" Straight Seatwall Cap, chiseled three sides	24 x 12 x 2.25" H	2 sq. ft.	53 lbs.	15 (30 sq. ft.)	845 lbs.
2-sided Bar Top (Indiana Limestone color only)	36 x 48 x 2.25" H	12 sq. ft.	327 lbs.	1 (12 sq. ft.)	377 lbs.
3-sided Bar Top (Indiana Limestone color only)	36 x 48 x 2.25" H	12 sq. ft.	327 lbs.	1 (12 sq. ft.)	377 lbs.
Fire Ring Cap (8 piece set)	52" dia. x 2.25" H		298 lbs.	1 set	298 lbs.

Dimensions shown are nominal.

Manufactured by:



7200 Broadway Ave. N, Rochester, MN 55906
Phone: 507-288-8850
rochesterpcp.com

©Copyright 2026. All Rights Reserved. This information has been prepared for the benefit of customers interested in Rochester Concrete Products. It was reviewed carefully prior to publication. Rochester Concrete Products assumes no liability for its accuracy or completeness. Final determination of the suitability of any information or material for the use contemplated, or for its manner of use, is the sole responsibility of the user. 126

