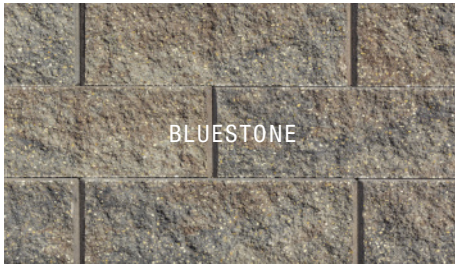


# CLASSIC® 6 & 8 RETAINING WALLS



BLUESTONE



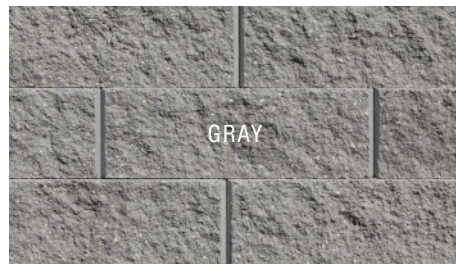
SANTA FE



SANDSTONE BROWN



SANDSTONE



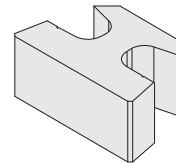
GRAY



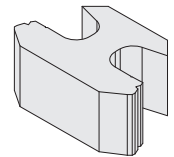
CHARCOAL

- Specify 6 or 8" height, straight or beveled face
- Strong and versatile, efficient to build, one-unit system
- Matching half and corner block (2-3 day lead time req'd.)
- 1.0" setback; adjustable
- Cap with 4" Universal or Chiseled Cap
- Available by layer or pallet

**ROCKWOOD**  
RETAINING WALLS  
*A better way™*



Straight Split



Beveled Split

**Classic 6 Colors:** (beveled face) Bluestone, Sandstone Brown, Santa Fe

**Classic 6 Colors:** (straight face) Bluestone, Charcoal, Grey, Sandstone, Sandstone Brown, Santa Fe

**Classic 8 Colors:** (beveled face) Grey, Sandstone

**Classic 8 Colors:** (straight face) Charcoal, Grey, Sandstone, Sandstone Brown

Classic 6 Blocks	Dimensions	Face Area	Weight	Units/Layer	Layers	Units/Pallet	Pallet Weight
Straight Face	18 x 12 x 6" H	0.75 sq. ft.	64 lbs.	12	3	36 (27 sq. ft.)	2,354 lbs.
Straight Base (grey only)	18 x 12 x 6" H	0.75 sq. ft.	64 lbs.	12	3	36 (27 sq. ft.)	2,354 lbs.
Beveled Face	18 x 12 x 6" H	0.75 sq. ft.	60 lbs.	12	3	36 (27 sq. ft.)	2,210 lbs.
Solid Corner Block**	18 x 9 x 6" H	0.66 sq. ft.	76.6 lbs.	5	4	20 (13.2 sq. ft.)	1,582 lbs.

To estimate number of units, divide total sq. ft. by 0.75 for Classic 6.

Classic 8 Blocks	Dimensions	Face Area	Weight	Units/Layer	Layers	Units/Pallet	Pallet Weight
Straight Face	18 x 12 x 8" H	1.0 sq. ft.	85 lbs.	12	3	36 (36 sq. ft.)	3,110 lbs.
Straight Base (grey only)	18 x 12 x 8" H	1.0 sq. ft.	85 lbs.	12	3	36 (36 sq. ft.)	3,110 lbs.
Beveled Face	18 x 12 x 8" H	1.0 sq. ft.	79 lbs.	12	3	36 (36 sq. ft.)	2,895 lbs.
Solid Corner Block**	18 x 9 x 8" H	1.0 sq. ft.	103.4 lbs.	5	4	20 (20 sq. ft.)	2,118 lbs.

Corners are split on one long and one short side. \*\* Rochester and Beaver Dam only. Dimensions shown are nominal.



Manufactured by:

7200 Broadway Ave. N, Rochester, MN 55906  
Phone: 507-288-8850  
[rochesterpcp.com](http://rochesterpcp.com)



©Copyright 2025. All Rights Reserved. This information has been prepared for the benefit of customers interested in Rochester Concrete Products. It was reviewed carefully prior to publication. Rochester Concrete Products assumes no liability for its accuracy or completeness. Final determination of the suitability of any information or material for the use contemplated, or for its manner of use, is the sole responsibility of the user. 125