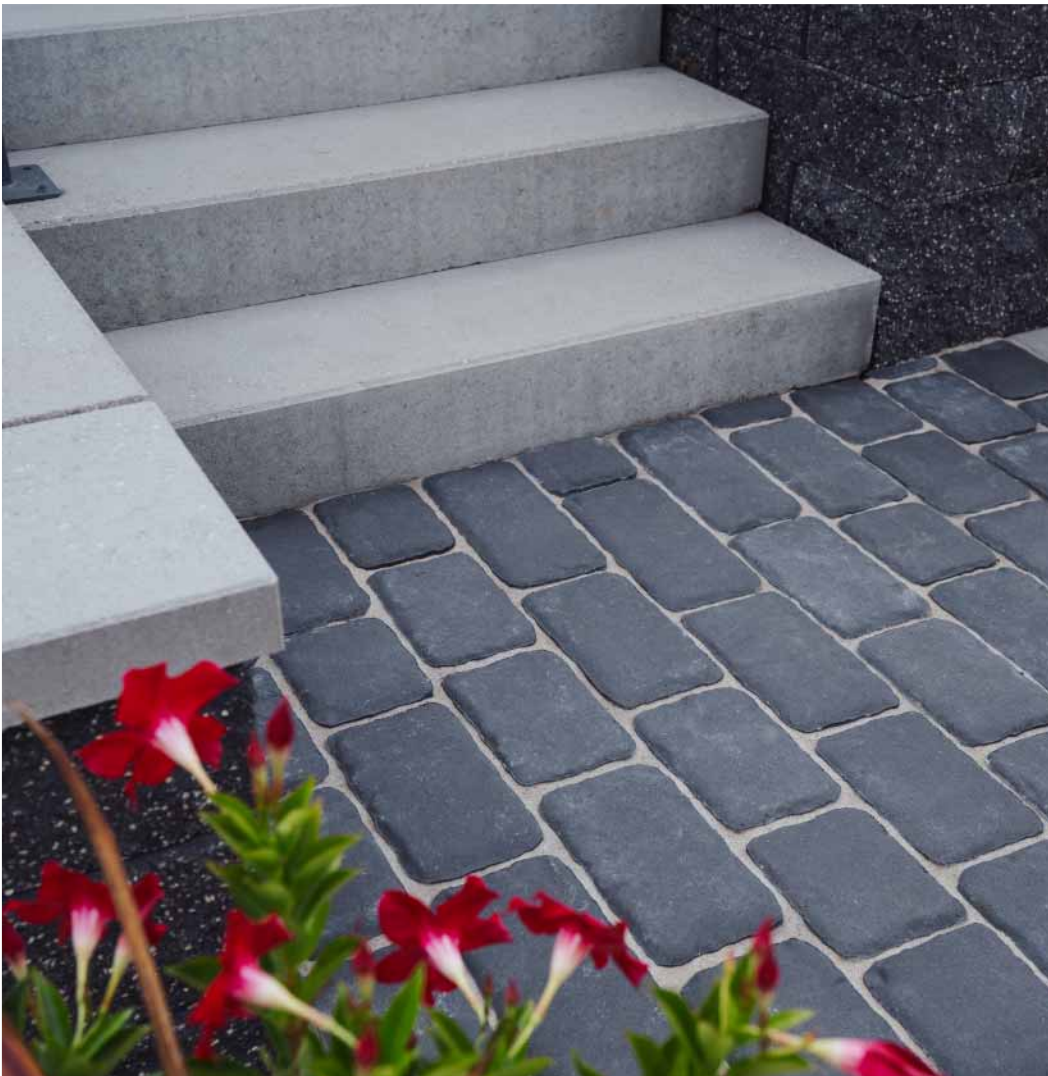


COBBLE STONE PAVER

Scan for online gallery



- Textured top, radius corners
- Large auto-spacer, high-flow-rate, eco/permeable
- Chroma Color facemix technology
- Four-piece, one-pallet system
- Available by pallet or layer
- Suitable for all pedestrian, pool and non-commercial vehicular applications
- To avoid damaging pavers, use a roller compactor or buffer pad when compacting



Size	Dimensions	Face Area	Weight	Units/Layer	Layers	Units/Pallet	Pallet Weight
Small	7.05 x 5.87 x 2-3/8" H	0.29 sq. ft.	7.44 lbs.	8			
Medium	8.63 x 5.87 x 2-3/8" H	0.35 sq. ft.	10.26 lbs.	8			
Large	10.2 x 5.87 x 2-3/8" H	0.42 sq. ft.	10.78 lbs.	8	8 (12.33 sq. ft.)	256 (98.7 sq. ft.)	2,584 lbs.
X Large	11.77 x 5.87 x 2-3/8" H	0.48 sq. ft.	12.32 lbs.	8			

Pallet square footage is accurate, layers and bands square footages have been rounded. Dimensions shown are actual unless noted.



Manufactured by:
Rochester
Concrete Products™

7200 Broadway Ave. N, Rochester, MN 55906
Phone: 507-288-8850
rochesterpcp.com

©Copyright 2026. All Rights Reserved. This information has been prepared for the benefit of customers interested in Rochester Concrete Products. It was reviewed carefully prior to publication. Rochester Concrete Products assumes no liability for its accuracy or completeness. Final determination of the suitability of any information or material for the use contemplated, or for its manner of use, is the sole responsibility of the user. 126

