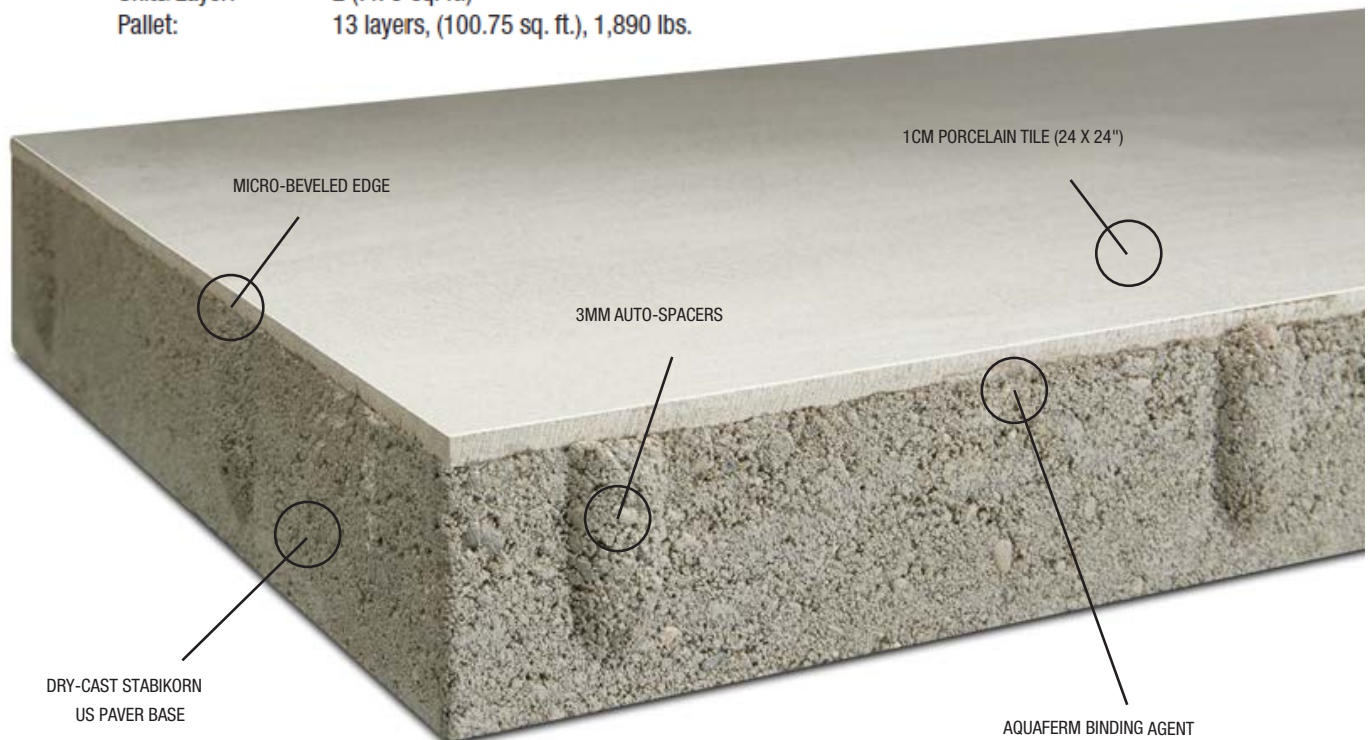


## Specifications / Packaging:

Dimensions: 23.62 x 23.62 x 1.6" H  
Face Area: 3.88 sq. ft.  
Weight: 70.7 lbs.  
Units/Layer: 2 (7.76 sq. ft.)  
Pallet: 13 layers, (100.75 sq. ft.), 1,890 lbs.



reddot design award  
winner 2018



## Why GeoCeramica® is Ideal for Your Pool Deck



**Color That Lasts:** GeoCeramica's porcelain surface is built to withstand the sun. Unlike other materials that can fade over time, GeoCeramica will look just as vibrant years from now as it did the day it was installed—even after years of direct sunlight.



**Slip-Resistant, Even When Wet:** Safety is a top concern around any pool. GeoCeramica features StepWise™ technology, which increases grip underfoot—even when wet. It exceeds the industry standard for slip resistance, giving you peace of mind without sacrificing style.



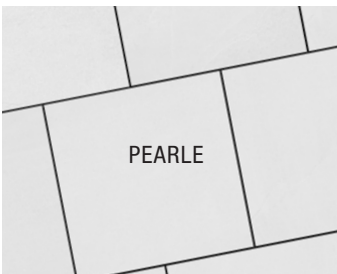
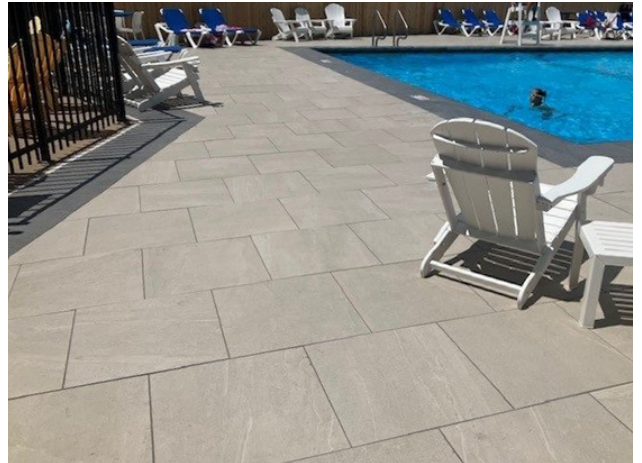
**Stays Cooler Underfoot:** GeoCeramica is designed to stay 10–15 degrees cooler than traditional concrete pavers or 2cm porcelain tile. The secret is in its CoolStep construction: GeoCeramica's lightweight Stabikorn base allows heat to dissipate rather than build up, so it's more comfortable for bare feet on hot summer days.



**Easy Cleanups, No Stains:** Pool decks are made for fun—which usually means food, drinks, and the occasional mess. GeoCeramica's dense porcelain surface resists stains and makes clean-up a breeze. Just wipe or rinse it off—no special cleaners or deep scrubbing required.



**GEOCERAMICA®**  
Porcelain + Paver



Manufactured by:

7200 Broadway Ave. N, Rochester, MN 55906  
Phone: 507-288-8850  
[rochesterpcp.com](http://rochesterpcp.com)



©2025 Rochester Concrete Products. All Rights Reserved. GeoCeramica is a registered trademark of MBI Group. 725